



# Supplemental Instruction (SI)

...and the benefits of peer -led learning.



**1 The Approach**



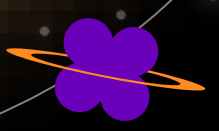
**2 “High risk” students vs. High risk Classes**



**3 CHEM 1151 at GSU**

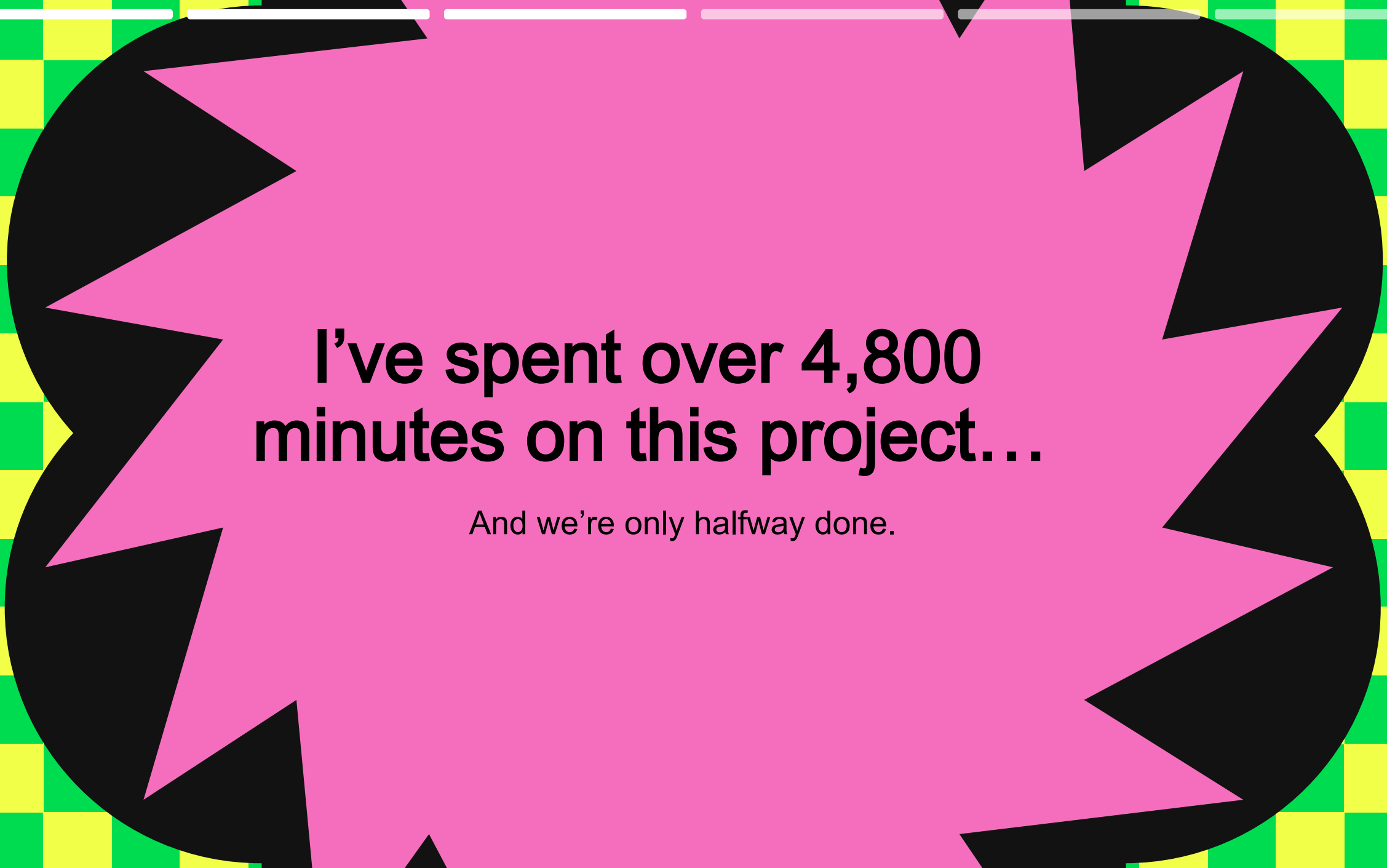


**4 Impact**



**5 SI Sessions**

**Project  
Objective**



**I've spent over 4,800  
minutes on this project...**

And we're only halfway done.

# Weekly Tasks

1



**Attend Lectures** 2.5hrs

Attend all class meetings

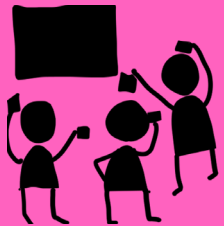
2



**Plan Sessions** ~3hrs

Develop creative and engaging ways to practice learned concepts

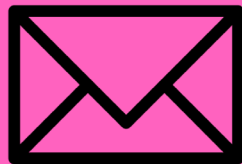
3



**Hold Sessions** 2hrs

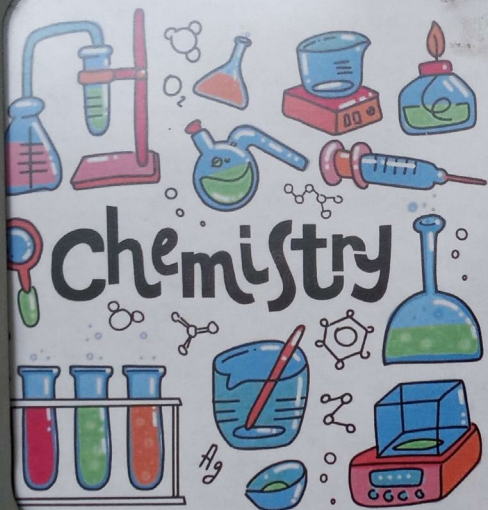
Execute session plan twice weekly, 1 hr per session

4



**Administrative Duties** 1hr

Prof. meetings, emails, recording data e.t.c.



## CHEM 1151 SI Session

SI Leader: Khairat Adebayo

CHEM 1151K - Prof. Nilmi Fernando

Session Times: WF 2:00-3:00pm

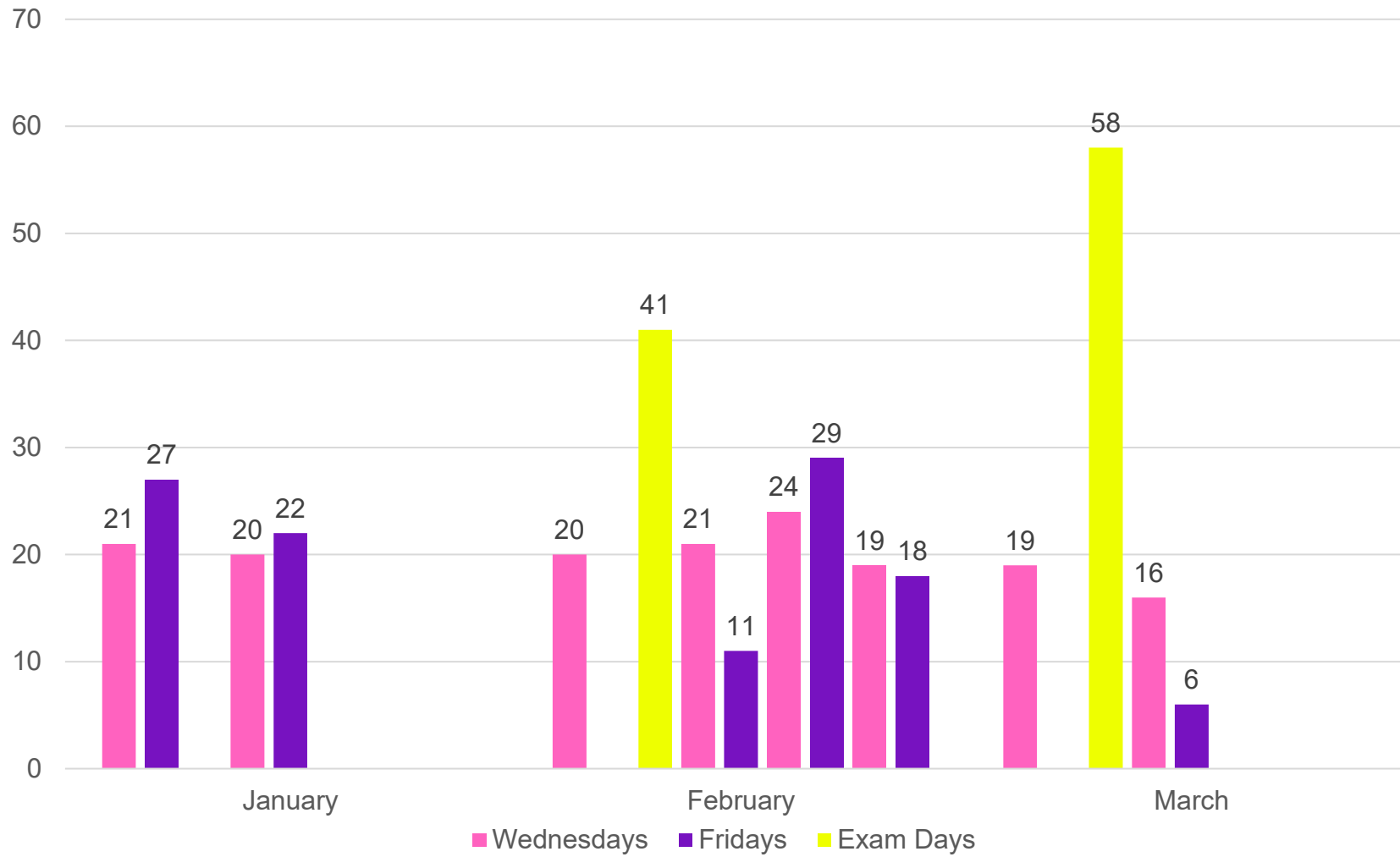
Location: Aderhold 330

Contact info: [kadebayo3@gsu.edu](mailto:kadebayo3@gsu.edu)

# Resources



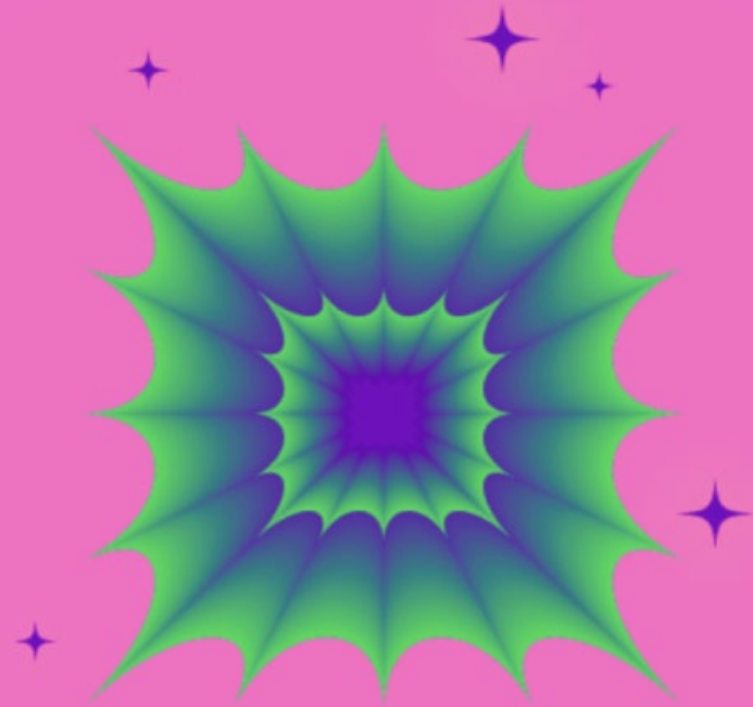
## SI Session Attendance





# Student Feedback

## Summary



### **Project Impact**

Feedback • Success • Challenges

As shown by students' feedback, SI has had a significant positive impact on their confidence and academic success in CHEM 1151.

Therefore, I have no hesitation in concluding that my SI Sessions have thus far achieved their specific goals.





# Personal Impact





**Thank you!**



Questions?

